



ENTER TO WIN!

Winter Escape

Relax in luxury on a private island resort.
The Meridian Club[®], Pine Cay, Turks and Caicos, British West Indies.
**Benefit informality and sensitivity to the natural environment make this tropical retreat a unique, unspoiled hideaway.*

Grand Prize includes

- 7 Nights in a Beachfront Guest Room (or Twin Club)
- Breakfast, lunch and dinner
- Complimentary Activities (snorkeling, scuba diving, kayaking and deep-sea fishing)
- Airfare and Ground Transportation

3 Runner-Up Prizes

- Pampering Spa Gift
- Gourmet 60 Second Fix Kit for Hands, Face & Feet
- La Source Foot Scrub
- Aloe Vera Mineral Muscle Soak

enter online now
www.crabtree-evelyn.com

Treat your skin this winter with our 5 easy steps!

Step 1.

Hand Spa
 Everything you need for incredibly soft hands. Two part exfoliate treatment restores suppleness and protects against moisture loss.
 Coconut 60 Second Fix!
 \$9.95

Step 2.

Moisturizing Bodywear
 Lock in precious moisture with Jojoba Oil balm and daily body care formulated natural fruit powered green Jojoba oil.
 Jojoba Oil Body Wash \$15
 Jojoba Oil Body Lotion \$18

Step 3.

Podicare Perfektiva
 Treat your feet. Refresh them with our incredible minty scrub and softening foot therapy cream for soothing dry patches on heels, toes.
 La Source Foot and Leg Therapy Cream \$12
 La Source Foot Smoothie \$18

Step 4.

Restore Relaxiv
 Take time for yourself. Relax in a therapeutic bath infused with restorative minerals and soothing vital extracts. Aloe Vera Mineral Bath Soak \$20

Step 5.

Change in scenery
 Escape to the ultimate...

CRABTREE & EVELYN[®]

CRABTREE & EVELYN

Winter resort brochure with product descriptions and contest rules.

PETER C. CHILTON
www.peterchilton.com

CRABTREE & EVELYN

Product catalog for a new line of organic and natural cosmetics

PETER C. CHILTON
www.peterchilton.com



Naturals

botanical body care with benefits

good for you

If you like the idea of living with more natural ingredients and fewer synthetics, Crabtree & Evelyn Naturals is for you. We've been making botanically based products for over 30 years and Naturals has exceeded even our impressively high standards. We hope you agree.

what's in it

We've used over 68 highest grade active botanical extracts, oils and mineral complexes in this range. Each Naturals botanical body bar soap, body butter, unscenting body scrub, shower mousse and body mist is individually formulated to deliver the highest performance benefits for your skin.

what's not

Crabtree & Evelyn Naturals products are worry free. No parabens preservatives. No sodium lauryl sulfate. No sodium lauryl sulfate. No mineral oil. No synthetic dyes.

natural synergy

Naturals products are based on synergistic blends using key botanicals. Every Naturals formula is a unique cocktail of select botanicals that when combined result in a benefit greater than the sum effect of the individual ingredients. For example, the Mango Butter & Grapefruit synergy is rejuvenating; Edamame, Rice and Bamboo is softening; White Tea & Birch is revitalizing and Verbena & Sage is purifying. In addition to enhanced benefits, these ingredients blends give each product a wonderfully natural and refreshing fragrance.

body scrub polish

For total body smoothing, these multitasking treatments work on several levels to refine and soften the skin and help protect it from moisture loss. Each contains a unique synergistic blend to make skin smoother and softer. Use once a week to keep your skin looking and feeling radiant and healthy.

<h3>energise</h3> <p>Clementine & Basil</p> <p>Bright citrus and herb blend with Vitamin C-rich clementine and invigorating basil extract.</p>	<h3>condition</h3> <p>Black Tea, Veiver & Sugarcane</p> <p>Fresh tea and herb blend with antioxidant black tea, skin-conditioning veiver and sugarcane extracts.</p>
<h3>rejuvenate</h3> <p>Olive, Almond & Myrtle</p> <p>Gentle leafy green herbal blend with skin-rejuvenating olive leaf extract, revitalising almond and myrtle extracts.</p>	<h3>tone</h3> <p>Pink Grapefruit & Cucumber</p> <p>Uplift citrus and green blend with skin firming and astringent grapefruit and cucumber extracts.</p>

CRABTREE & EVELYN

Men's Collection

Our distinctive fragrances, shaving and grooming essentials are for men who seek the very best. A man's scent should fit his chemistry, personality and lifestyle. We offer four marvellous choices: aromatic and exotic Sandalwood, the old-world luxury of Sienna*, adventurous and contemporary Nomad* and new nurturing Sweet Almond Oil.

New for 2005

Our new Almond Oil Shave Cream and traditional Shave Soap contain sweet almond oil which is a highly effective natural moisturiser for the skin. We've also added Sienna and Nomad Shave Soaps in classic wooden tins - as well as Deodorant in both Sandalwood and Sienna fragrances.



SWEET ALMOND OIL SHAVE CREAMS
Our unscented shave cream is formulated with natural sweet almond oil and emulsifying glycerine. It provides a fine lather that rinses easily, leaving the skin soft, supple and lightly scented. Our Almond Oil Shave Soap, used with a traditional shaving brush, provides a conditioning lather for a close, comfortable shave.

SWEET ALMOND OIL NOURISHING SHAVE CREAM REFILL, 100g, NO. 218001
SWEET ALMOND OIL NOURISHING SHAVE SOAP, 100g, NO. 218002
SWEET ALMOND OIL SOOTHING SHAVE SOAP REFILL, 10g, NO. 2086

Olive Wood Brushes & Accessories

Our fine olive wood brushes are crafted in Germany. Pined since biblical times, no other hardwood excels olive wood for durability; it is so dense that water cannot penetrate it. The handsome grain, hidden deep in the heart of the wood, reveals itself in a variety of colorings and no two pieces are alike. With use and age, the grain of our olive wood brushes will become even richer and more beautiful.



Olive Wood Hairbrushes
Our fine olive wood hairbrushes are perfect for the most elite appearance. Superior quality. Choose from three styles: our traditional wide-tooth comb with a handle, a special wide-tooth styling brush with accents, rounded wooden points to eliminate static electricity, and an essential travel brush.

OLIVE WOOD OVAL BRUSH BRISTLE HAIRBRUSH, NO. 208182
OLIVE WOOD STYLING BRUSH WITH WOODS SANDALWOOD FINISH, NO. 208184
OLIVE WOOD BRUSH BRISTLE HAIRBRUSH, NO. 208183

Olive Wood Luxury Bath Brush
Our handsome bath brush, made of water-resistant olive wood, will retain its shape with constant use for years. The soft bristles, with delicate tips of bristles, set only on olive wood handle. Is guaranteed good for a man's life.

OLIVE WOOD LUXURY BATH BRUSH, NO. 208184
OLIVE WOOD HAIR BRUSH, NO. 208183

Manicure Kit, Matte Nickel Manicure Kit
For those that are unexcited about handcare, this is a well-stocked, pocket or a case handy travel kit-up. Includes: Nail brush, nail scissors, file, clippers and nail file.

MANICURE KIT, NO. 208174
MATTE NICKEL MANICURE KIT, NO. 208177

Shave Brushes, Metal Tube Key
Our olive finished set of fine quality, made with hand-selected natural bristles that are soft-to-the-skin and firm. Designed with our men's grooming, this replacement tube key fits the holder of our olive collection of olive soap tins and the very best shaving kit.

BRUSH WITH BRISTLES WITH WOODS SANDALWOOD FINISH, NO. 208176
BRUSH WITH BRISTLES WITH WOODS SIENNA FINISH, NO. 208177
BRUSH WITH BRISTLES WITH WOODS NOMAD FINISH, NO. 208178
BRUSH WITH BRISTLES WITH WOODS SWEET ALMOND OIL FINISH, NO. 208179

1.877.486.9410

CRABTREE & EVELYN

Men's Collection



NOMAD
EAU DE TOILETTE
100 mL e 3.4 FL. OZ.

SIENNA
EAU DE TOILETTE
100 mL e 3.4 FL. OZ.

SANDALWOOD
EAU DE TOILETTE
100 mL e 3.4 FL. OZ.

CRABTREE & EVELYN

Product catalog and information brochure for men's line

PETER C. CHILTON
www.peterchilton.com

CRABTREE & EVELYN

Product catalog for a new
line of skin care products

PETER C. CHILTON
www.peterchilton.com



CRABTREE & EVELYN

Skin Care Remedy

Introducing
SKIN CARE *Remedy*

Our new range of intuitive skin care draws from the very best of advanced cosmetic science and time-trusted natural plant therapies. These targeted solutions fuse high performance ingredients with the power of plant essences to remedy specific imbalances and help support the body's natural ability to repair itself.



CRABTREE & EVELYN

New
Introducing
SKIN CARE *Remedy*



Skin

CRABTREE & EVELYN SKIN CARE

WRINKLE TREATMENT AND FIRING COMPLEX

HYDRATION BOOSTER

FADE SERUM

1.875.286.6222

UNIVERSITY
OF MASSACHUSETTS
- MEDICAL SCHOOL

Vision piece for medical
school revitalization project

PETER C. CHILTON
www.peterchilton.com

What to Expect from Campus Modernization

We've already begun an intensive period of analysis, planning and conceptual design. Beginning January 2003, we expect to begin making initial interior space and structural changes. In the spring, replacement of the façade and window system will begin in earnest, and architectural conceptions of the new University Campus will be presented.

campus revampus is the comprehensive communications campaign we'll use to keep you informed: watch for our signs and visit our Web site at www.umassmed.edu/campusrevampus; send an e-mail to campus.mod@umassmed.edu or write us at the Office of Public Affairs, University of Massachusetts Medical School, 55 Lake Avenue North, Worcester, MA 01655.

The University of Massachusetts Medical School and UMass Memorial Health Care share a common campus and a common goal to serve the people of the region through excellence in education, patient care, public service and biomedical research. As the only public medical school in Massachusetts, UMMS takes special pride in training physicians committed to primary care; to developing scientists devoted to alleviating suffering and improving public health; and to teaching nursing professionals who have a real-world impact on healing.

UMass Memorial Health Care strives to be the health care provider of choice, setting the standard for excellence in clinical care, service, teaching and research. Our vision is to provide world-class health care from the heart, and as Central Massachusetts' largest not-for-profit health care delivery system, we have a long-term commitment to establishing state-of-the-art facilities that meet the health care needs of the region. In conjunction with our academic partner, Campus Modernization is our latest capital improvement initiative, and serves to complement recent capital investments at our Hahnemann and Memorial campuses.

campus revampus
putting the pieces of progress together



This brief introduction of our Campus Modernization plan is intended to give you a "heads up" that big changes are coming. There will be renovations and alterations in the years ahead. Please call the same number. But by calling upon the resources, passion and goodwill of thousands of UMass Medical School and UMass Memorial employees, we'll be ensuring you can be involved in the project on those who depend on the campus for education, care, instruction and scientific discovery. We've heard some of the best comments in the world to help us change, design and implement these changes, and then consider them to be—your voice to us—that the safety of our patients, students and employees must come first.

Key elements of campus modernization

Through a carefully planned process, the necessity of a team of skilled construction and architectural/engineering experts and a committed investment, the project's key elements, described in general terms, will be made ready between 2004 and 2008.

replacement of the exterior granite facade and window system

This replacement of the project is not cosmetic in nature. The current granite and window system is over 40 years old and requires a range of structural maintenance to be replaced with a weather-tight, energy-efficient and responsible plan to replacement with a weather-tight, energy-efficient and contemporary "building envelope" that uses current technology, materials and design.

redesign and improvement of campus building entrances, walkways and exterior signage

We are an recognized health services network, enhancing future physicians, researchers and nursing practice care requires the benefit of a central New England and existing thousands. This includes the ability hundreds of thousands of visits to the campus each year. Improved access, exterior signage and new signage will ensure that everyone will find a building easier to identify and navigate.

expansion of the emergency department

More than 70,000 patients are seen each year in the University Campus Emergency Department, yet the department—built as a busy emergency unit intended to accommodate a few thousand patients a year—has not been comprehensively renovated or expanded since its opening in the 1950s. The plan for expansion will more than triple the space dedicated to emergency services on the University Campus and support the latest technology and equipment, critical to the health and safety of everyone in the region.

expansion of cardiac catheterization lab, operating rooms and endoscopy suites

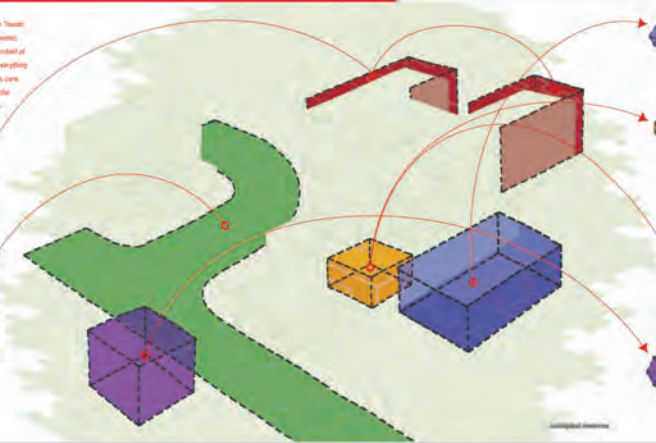
UMass Memorial Medical Center is the region's leading provider of cardiac catheterization services, meeting the needs of over 3,000 patients each year. One of the three University Campus labs were built 20 years ago to accommodate 1,000 patients annually. University Campus operating rooms, built for the comparatively narrow range of surgical procedures in a different medical era, have immense capacity and technological assets. Technology procedures require for cardiac cath, minimally invasive procedures are crucial to contemporary surgical care. When completed, this expansion will dramatically increase space devoted to these essential activities.

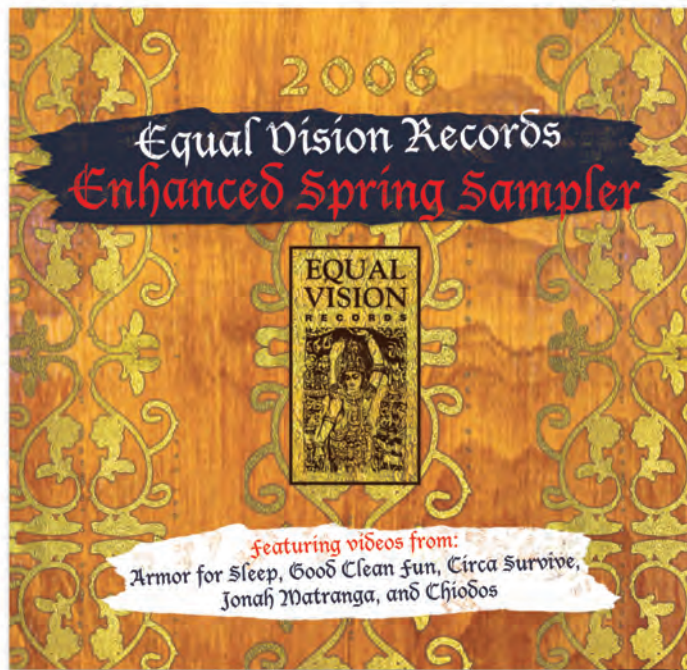
in-situ magnetic resonance imaging (MRI) and renovation of space for diagnostic radiology

Few areas of medicine have changed as much in 50 years as diagnostic imaging. In the context of contemporary demands of patient care, we are the MRI facility is an investment in technology we're pleased to be able to make. The facility renovation necessary to accommodate the technological advances will make more space for diagnostic radiology care for more patients and staff-enhanced environments.

construction of an additional multi-level parking garage

Parking concerns have hampered access to the hospital and been a barrier to care. The new garage will provide additional and more convenient parking, especially for patients and visitors to the hospital and clinic, and will be sure to provide parking circumstances for our employees.

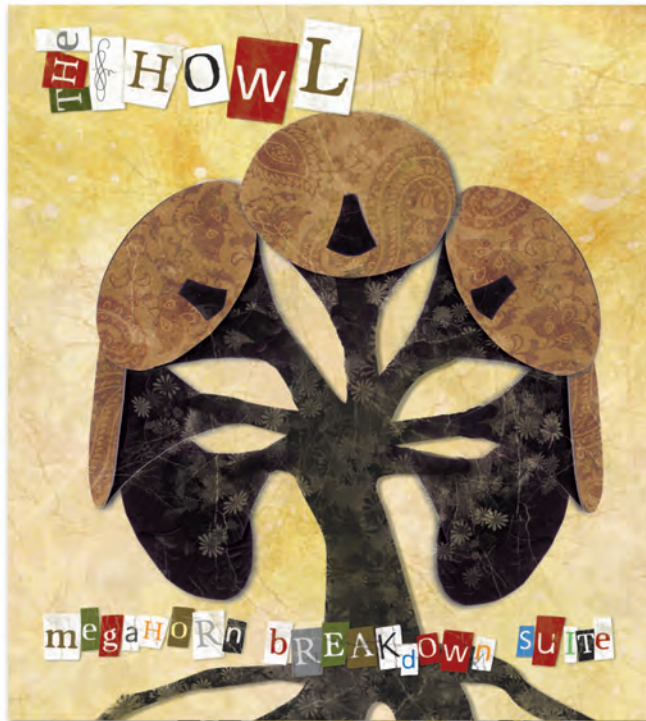




EQUAL VISION RECORDS

CD sampler

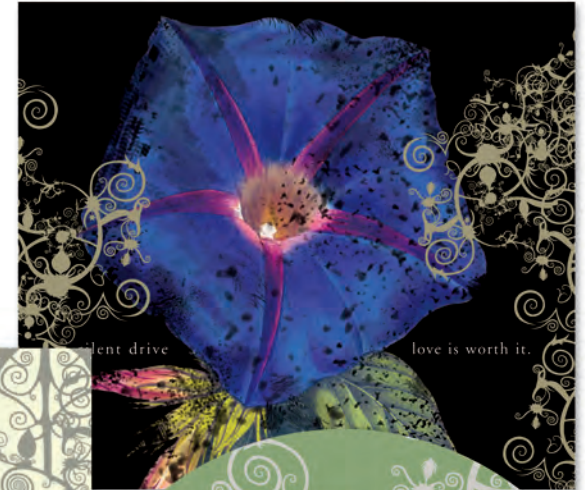
PETER C. CHILTON
www.peterchilton.com



THE HOWL

CD design and layout,
digipak

PETER C. CHILTON
www.peterchilton.com



EQUAL VISION RECORDS

CD design and layout, with wrap-around sleeve

PETER C. CHILTON
www.peterchilton.com

recovery
let's over-think it, and watch the machine working in
and back inside her thinking that she's made her
body but may glad to show with one side
on both legs to be interested to have
my heart's not what we are built to be
we were't built back and now they change are looking up,
want's we're here and now the face that we have we
tell all your friends to tell you the same
but don't have time before they tell you how the only one
want's me to you don't get me back again
and tell your new love that you've never said hi
I know this one's not intended,
but I've got my thoughts on the guy with the future tag
as if he had jumping madly with my friend
and laughing at ones that can't
believe how things could be so close when your afraid
to be anything but dead

deacy cracks
I'm afraid to close my eyes
about to be a shadow trying not to make
that the words on the radio only could break my heart
and for don't have the technology for something like this
then would you be the only one to break me here
I have been dreaming for years
about those computers trying to give the you
but each night makes those eyes and hands like there
are not that one's in machine
and believe me I've tried to replace everything I know
but each night makes those eyes and hands like there
are not that one's in machine
and believe me I've tried to replace everything I know
but each night makes those eyes and hands like there
are not that one's in machine

henpecked
I would have never taken all this weight off your back
if I knew the feeling you would have looking back it would
I can't see making me for help this time
keep those eyes up as close as you
want's I'm sleeping on the biggest topic
the more we've got you out of reason
It's time to fight
you always wanted to be mine
what you were all I wanted you for
it's time to fight
when I can't believe I believed those unbelievable years
and that with that word my and
what more when the hell are you
we are the husband, the wife it's you
can't stay in the zone, no stopping or still time
we're just finally showing how again
and the words that word my and
It's time to fight
you always wanted to be mine
what you were all I wanted you for
we decided to make our dreams come true
we're going to do it now
by walking with me and other hand and that
we decided to make our dreams come true
we're going to do it now
by walking with me
let's get ready to fight
we're going to fight
we're going to fight this machine
we're going to fight
we're going to fight this machine